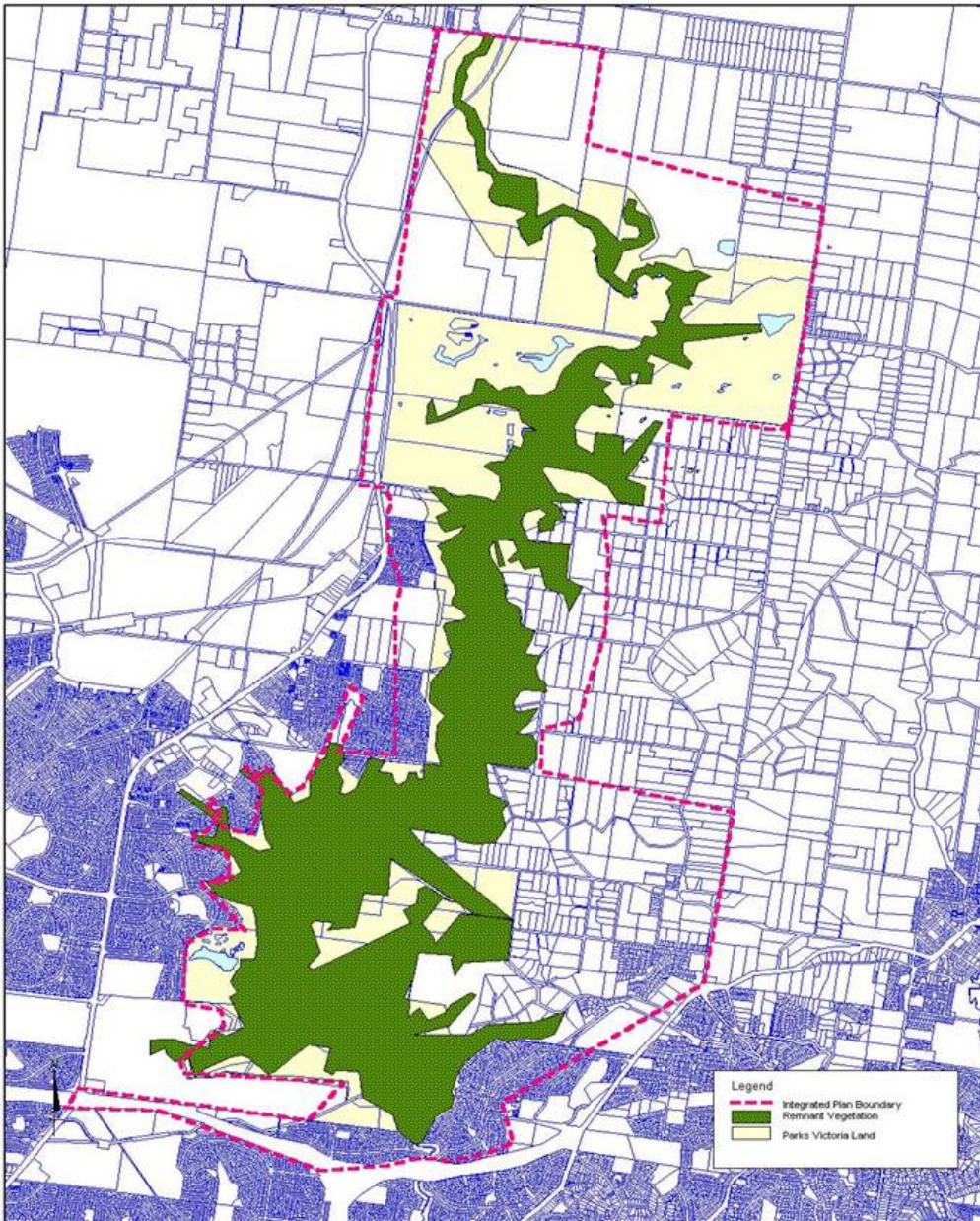


Plenty Gorge Precinct Integrated Fire Prevention Strategy

***Norman Golgerth
Emergency Risk Co-ordinator
Nillumbik Shire Council***





STATE OF VICTORIA
 DEPARTMENT OF LAND, WATER AND HERITAGE
 MAP PRODUCED BY PARKS VICTORIA
 RESOURCES MANAGEMENT
 This map supersedes all previous editions

Plenty Gorge Precinct Integrated Fire Plan
 Plan Boundary, Parkland Area and Remnant Vegetation

6 October 2003

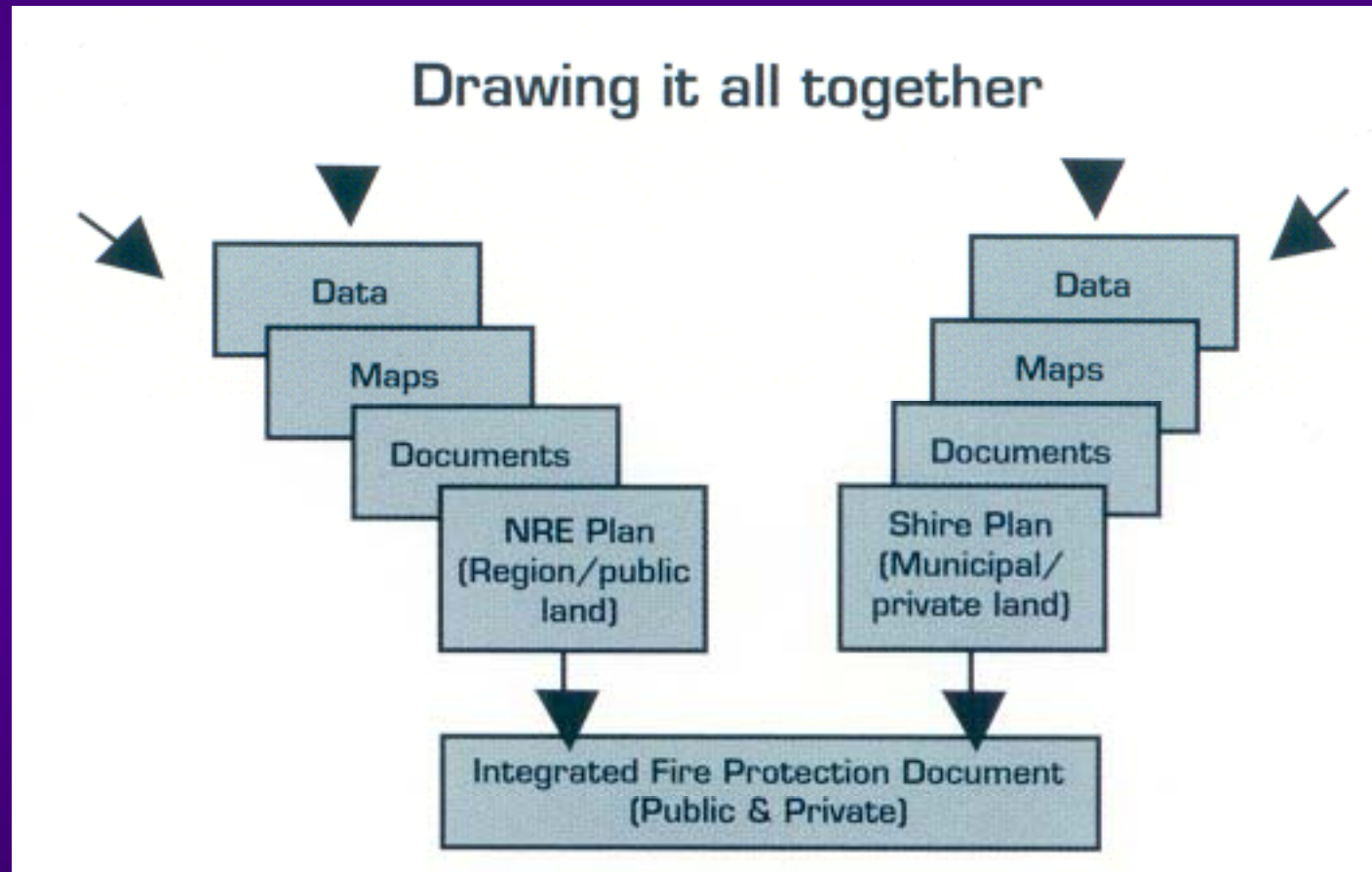


Introduction

- 1. The strategy is not a new concept.**
- 2. The Precinct.**
- 3. Critical effective fire prevention strategies.**
- 4. Consultation with the community.**
- 5. Committed to work together.**
- 6. Alignment to Brigade Response Plans.**
- 7. A full review of the strategy.**



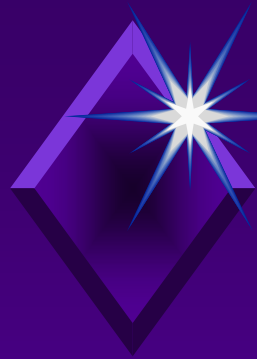
Drawing it all together





Objectives/outcomes

1. Developed in association.
2. Wholistic planning.
3. State Government review of Significant Fire Events in 2002/2003.
4. “*Victorian bushfire Enquiry 2003-Esplin Report*”.
5. Community participation.



The key objectives

- 1. Maps, describing wildfire management strategies within the precinct.**
- 2. Acceptance of the integrated approach by all stakeholders.**
- 3. Fire Prevention works on Public and Private land.**
- 4. A fire prevention strategy that is acceptable to all.**
- 5. To make recommendations to relevant authorities.**



Risk Identification

Cause Of Fire

- 1. Camp Fires/Fishermen**
- 2. Malicious/Arson**
- 3. Park visitors**
- 4. Car fires**
- 5. Faulty machinery**
- 6. Burn-off escapes**
- 7. Lightening strikes**



Influencing Factors

- 1. Water Points**
- 2. Access (Both within Park and External)**
- 3. Existing Land Management Practices - Private landholders**
- 4. Weed eradication**
- 5. Existing Land management practices – PV**
- 6. Existing Land management practices – Municipalities**
- 7. Adequacy of Fire Prevention strategies**



Influencing Factors / continued

1. **Fire Breaks**
2. **Buffers**
3. **Fuel Reduction burns**
4. **Subdivisions**
5. **Community Expectations**
6. **Plenty Gorge Park development**
7. **Government Agency Planning / funding**
8. **Municipal strategies – eg Re vegetation**
9. **Fire Prevention restrictions – Environmental issues**



Conclusion



The PGPIFP is developed in response to a long-standing need to improve Fire Prevention strategies. The alignment of previous individual agency plans into one wholistic approach, agreed to by all parties will greatly improve the efficiency and strategic approach to fire prevention.