



Michael Bourne

VSCN Annual Conference

17 November 2005



# Community Safety Networks

International, National, State, Local &  
Neighbourhood Perspectives







**WHO Collaborating Centre on  
Community Safety Promotion**



# WHO Safe Communities

‘Safety is a state in which hazards and conditions leading to physical, psychological or material harm are controlled in order to preserve the health and well-being of individuals and the community’

# Community Safety Spectrum



**Drugs &  
Alcohol**

**Workplace  
Safety**

**Crime  
Prevention**

**Education  
Employment**

**Transport  
& Roads**

**Urban  
Safety**

**Positive  
Early  
Intervention**

**Environment -  
Built and Natural**

**Home  
Safety**

**Public  
Health**

**Fire &  
Emergency  
Services**

**Law  
Enforcement**

## Forming local partnerships for safety

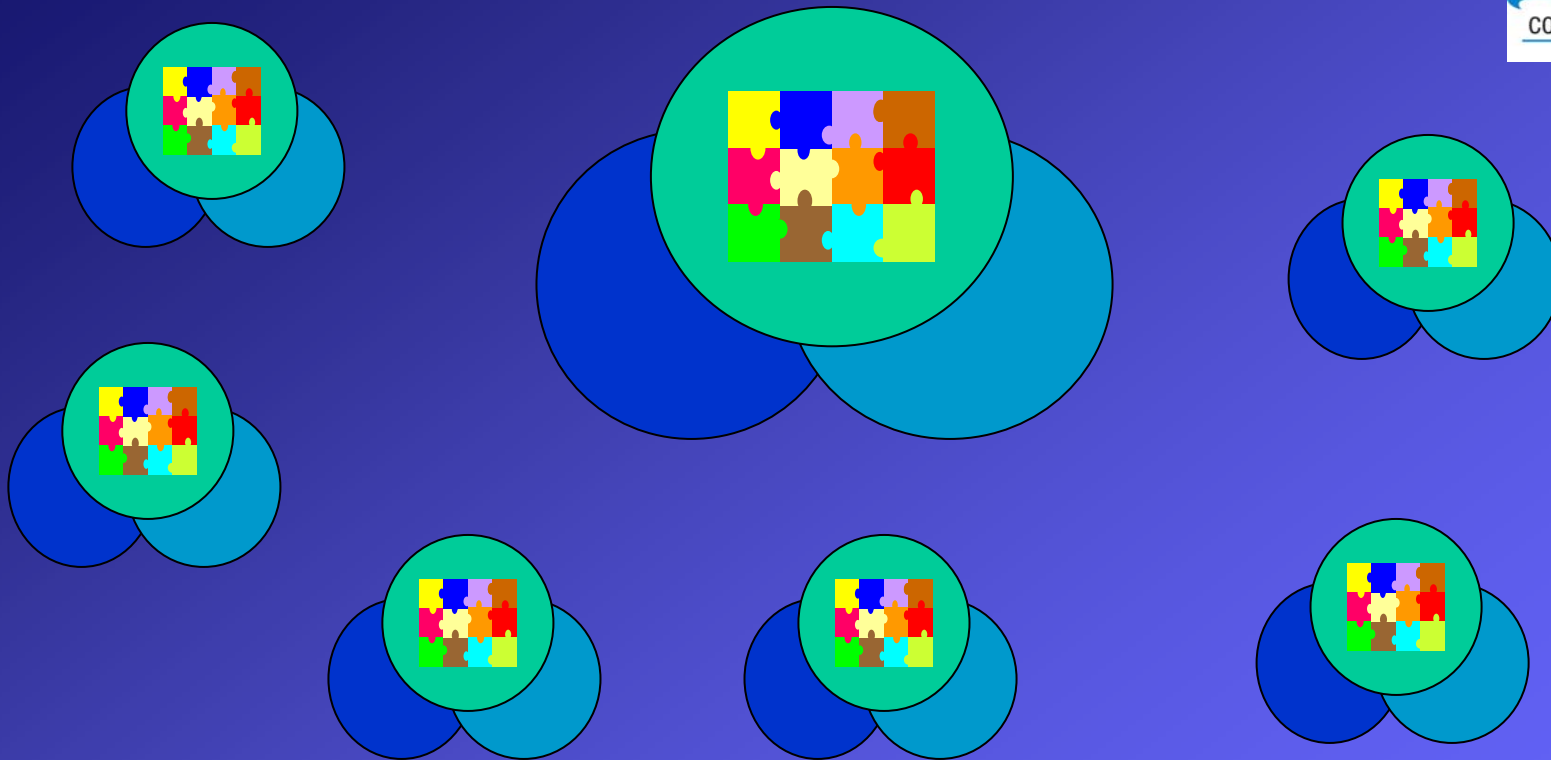
Australasian NHW Conference, Melbourne, 6 October, 2005

# Partners in Safety



Building sustainable local partnerships for safety and well being

# Partners in Safety



A partnership of leaders from service providers, business and community

# Agenda



1. International - WHO
2. National SC Foundations – CSCF, SCFNZ, ASCF
3. State SC Networks – VSCN, NSWSCN, QSCSC, ICCWA, NT, SA
4. Local Safe Community Partnerships
5. Neighbourhood Safety Teams

# Agenda



1. **International - WHO**
2. National SC Foundations – CSCF, SCFNZ, ASCF
3. State SC Networks – VSCN, NSWSCN, QSCSC, ICCWA, NT, SA
4. Local Safe Community Partnerships
5. Neighbourhood Safety Teams





# WHO Safe Communities

- Building partnerships and coalitions
- Working to reduce intentional and unintentional injury – of all kinds – from all causes - in all settings
- Increasing the impact of programs through working together



**WHO Collaborating Centre on  
Community Safety Promotion**



# WHO Safe Communities

- Undertaking fundamental research
- Providing education and learning programs
- Sharing knowledge and experience



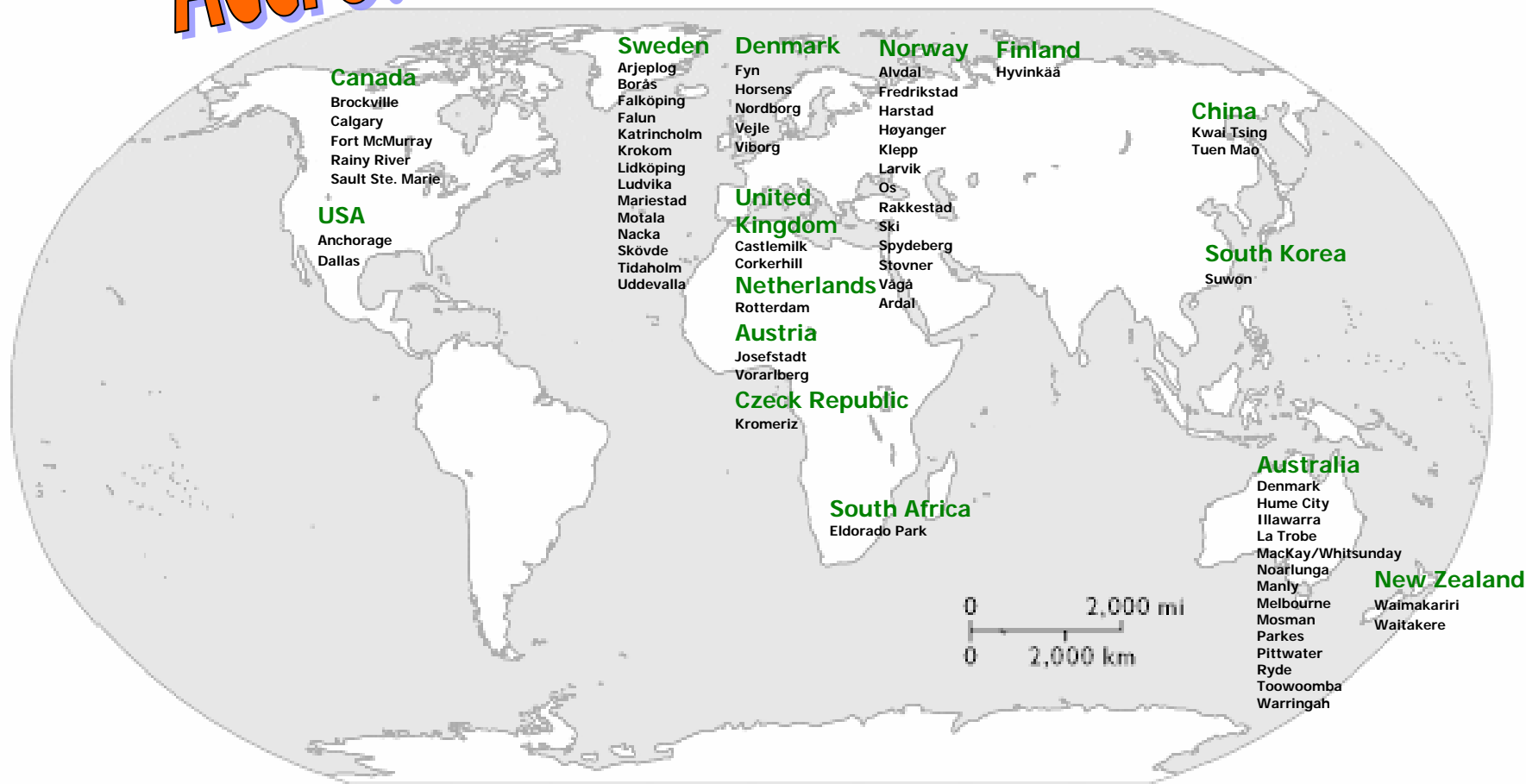
## WHO Collaborating Centre on Community Safety Promotion



# WHO Safe Communities

- Operating 16 years – since the International Injury Prevention and Control Conference in Sweden in 1989
- 70 designated SC's across 18 countries (September 2005)
- 15 affiliate support centres – including Royal Children's Hospital Safety Centre and the Monash University Accident Research Centre

# Accredited WHO Safe Communities







# WHO Safe Communities

The two dimensions to safety :

- **objective** – prevalence and incidence of injury events - assessed by behavioural and environmental parameters
- **subjective** - appreciated according to the feelings of safety of the population – assessed by surveys and focus groups

The third dimension we include is **partnerships**  
– the strength and value added



## WHO Collaborating Centre on Community Safety Promotion



# WHO Safe Communities

- potential to double to over 130 communities over the next decade
- interest developing in 9 more countries – potential increase of 50%
- 14 designated Safe Communities in Australia (June 2005); 2 in NZ; with many more preparing to become Safe Communities
- Website link - [http://www.phs.ki.se/csp/index\\_en.htm](http://www.phs.ki.se/csp/index_en.htm)

# Benefits of Safe Communities



- Increase both actual and perceived safety for residents, students, workers and visitors
- Provides economic benefits – business development, reduced injury costs
- Build strong and lasting partnerships – increase social capital
- Promote collaborative safety and prevention programs and approaches
- International recognition as a safe community

# Agenda



1. International - WHO
2. National SC Foundations – CSCF, SCFNZ, ASCF
3. State SC Networks – VSCN, NSWSCN, QSCSC, ICCWA, NT, SA
4. Local Safe Community Partnerships
5. Neighbourhood Safety Teams





## WHO Collaborating Centre on Community Safety Promotion



# SC Supporters Network is closely linked across the globe -

- World wide alliance of community safety ambassadors
  - KI in Sweden since 1989 - [http://www.phs.ki.se/csp/index\\_en.htm](http://www.phs.ki.se/csp/index_en.htm)
- Canadian Safe Communities Foundation – since 1996 -  
<http://www.safecommunities.ca/home.htm>
- European Safe Communities Network – since 1997  
<http://www.safecommunity.net/ESCON/index.htm>
- Safe Communities Foundation of NZ – formed in 2004 –  
<http://www.safecommunities.org.nz/>
- Australian Safe Communities Foundation – formed in  
2004 – website under development



Australian Safe  
Communities  
Foundation



QUEENSLAND HEALTH

10 top  
injuries  
to  
children



**WHO Collaborating Centre on  
Community Safety Promotion**



# ASCF

**The ASCF Vision is -**

**“to make Australia the  
safest country in the  
world in which to live,  
learn, work, travel and  
play – one community  
at a time”**





## WHO Collaborating Centre on Community Safety Promotion



**The immediate, intermediate and long term goals for safety promotion and injury prevention in Australia are :**

- Creating safe environments**
- Adopting risk management behaviours**
- Achieving a positive safety culture**





## WHO Collaborating Centre on Community Safety Promotion



**The ASCF supports these goals by –**

- Building the capacity of the SC movement in Australia and in each state / territory**
- Providing opportunities for national and international recognition for SC programs – WHO and CSCF designations**
- Providing leadership and advocacy at the national level**
- Creating opportunities for partnerships**



Australian Safe  
Communities  
Foundation

Australasian NHW Conference, Melbourne, 6 October, 2005

# Agenda



1. International - WHO
2. National SC Foundations – CSCF, SCFNZ, ASCF
3. State SC Networks – VSCN, NSWSCN, QSCSC, ICCWA, NT, SA
4. Local Safe Community Partnerships
5. Neighbourhood Safety Teams

## SC In Australia

- **Victorian Safe Communities Network -**

<http://www.vscn.org.au/>

- **Injury Control Council of WA -**

<http://www.iccwa.org.au/iccwa.htm>

- **NSW Safe Communities Network**

- **Queensland Safe Communities Support Centre -**

<http://www.safecommunitiesqld.org/modcore/HomePage/frontend/index.asp>

- **SA Safe Communities Network**

- **NT Safe Communities Network**



# VSCN

- Started in 1996 – after the 5<sup>th</sup> International Safe Communities Conference was held in Melbourne and Regional Victoria in 1996
- when Hume and Latrobe were designated as WHO Safe Communities
- Now a wide membership from local governments, agencies and community groups across Victoria



# VSCN

- Vision is – think Safe, act Safe, feel Safe, be Safe
- Mission is to support professional development of community safety practitioners
- And to support local communities to become safer through adopting the WHO safe community model
- Three strategic priorities – events, communication, membership

## Major VSCN events are -

- Quarterly seminars – Feb, May & August
- 3<sup>rd</sup> Annual conference – today
- Community Safety Month – October each year – initiated in 1996 by the VSCN – now Australia-wide, and the ASCF is working on taking CSM international

# Agenda



1. International - WHO
2. National SC Foundations – CSCF, SCFNZ, ASCF
3. State SC Networks – VSCN, NSWSCN, QSCSC, ICCWA, NT, SA
4. **Local Safe Community Partnerships**
5. Neighbourhood Safety Teams

# Partners in Safety

## In Victoria

- There are local safety committees in each of the 79 local government areas
- Local governments and Victoria Police are taking the lead in working with community groups, businesses and agencies
- On identifying & solving local priority community safety issues
- To integrate action across the whole safety spectrum - health, crime and well being



# Community Safety Profiles



- A great Victoria Police initiative for CSM
- community safety profiles, with summaries of regional and local initiatives, and announcements for public safety forums –
- on the web from Saturday 1 October at the following URL -  
[http://www.police.vic.gov.au/content.asp?Document\\_ID=1454](http://www.police.vic.gov.au/content.asp?Document_ID=1454)



# Agenda

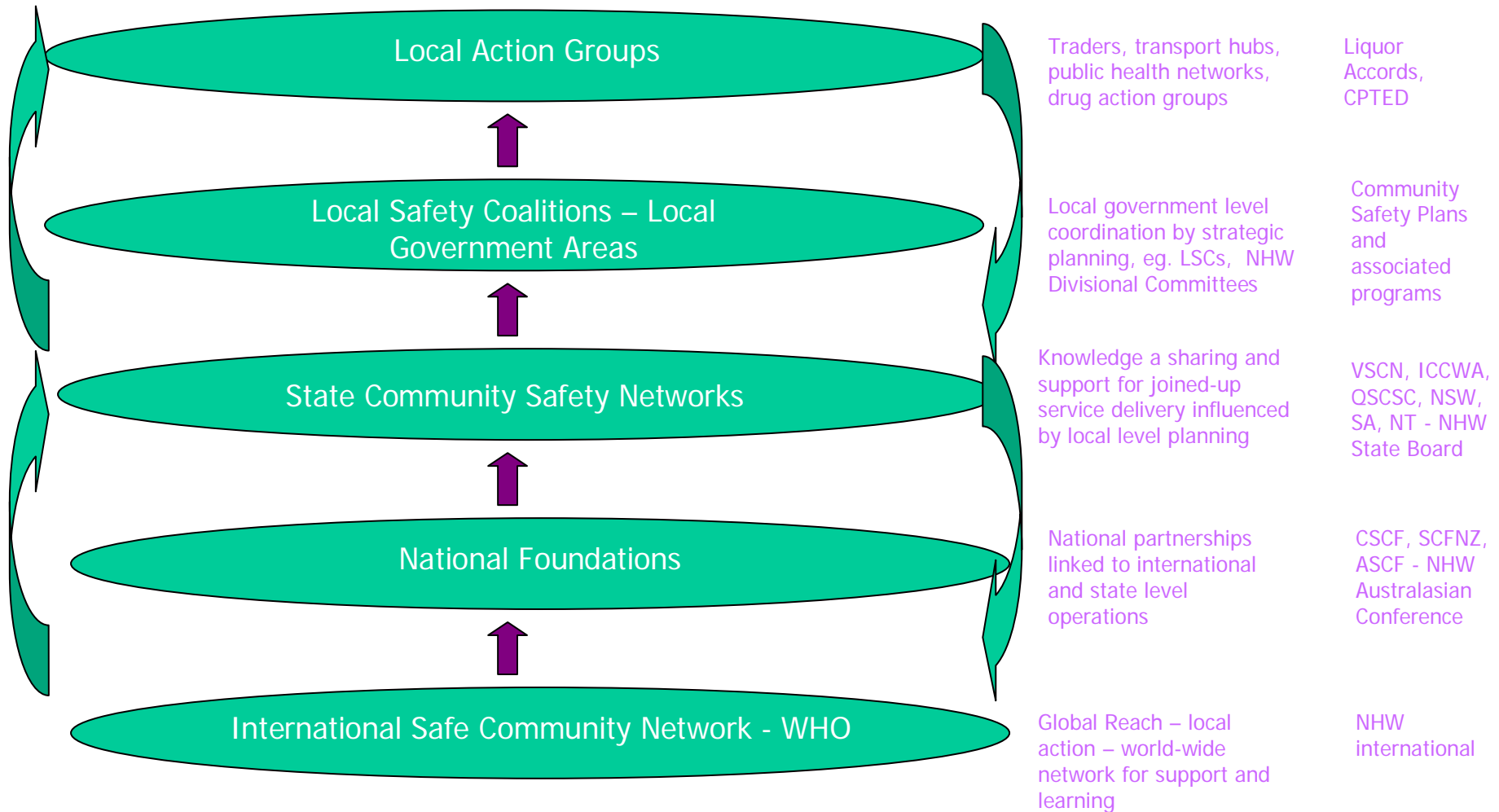


1. International - WHO
2. National SC Foundations – CSCF, SCFNZ, ASCF
3. State SC Networks – VSCN, NSWSCN, QSCSC, ICCWA, NT, SA
4. Local Safe Community Partnerships
5. Neighbourhood Safety Teams

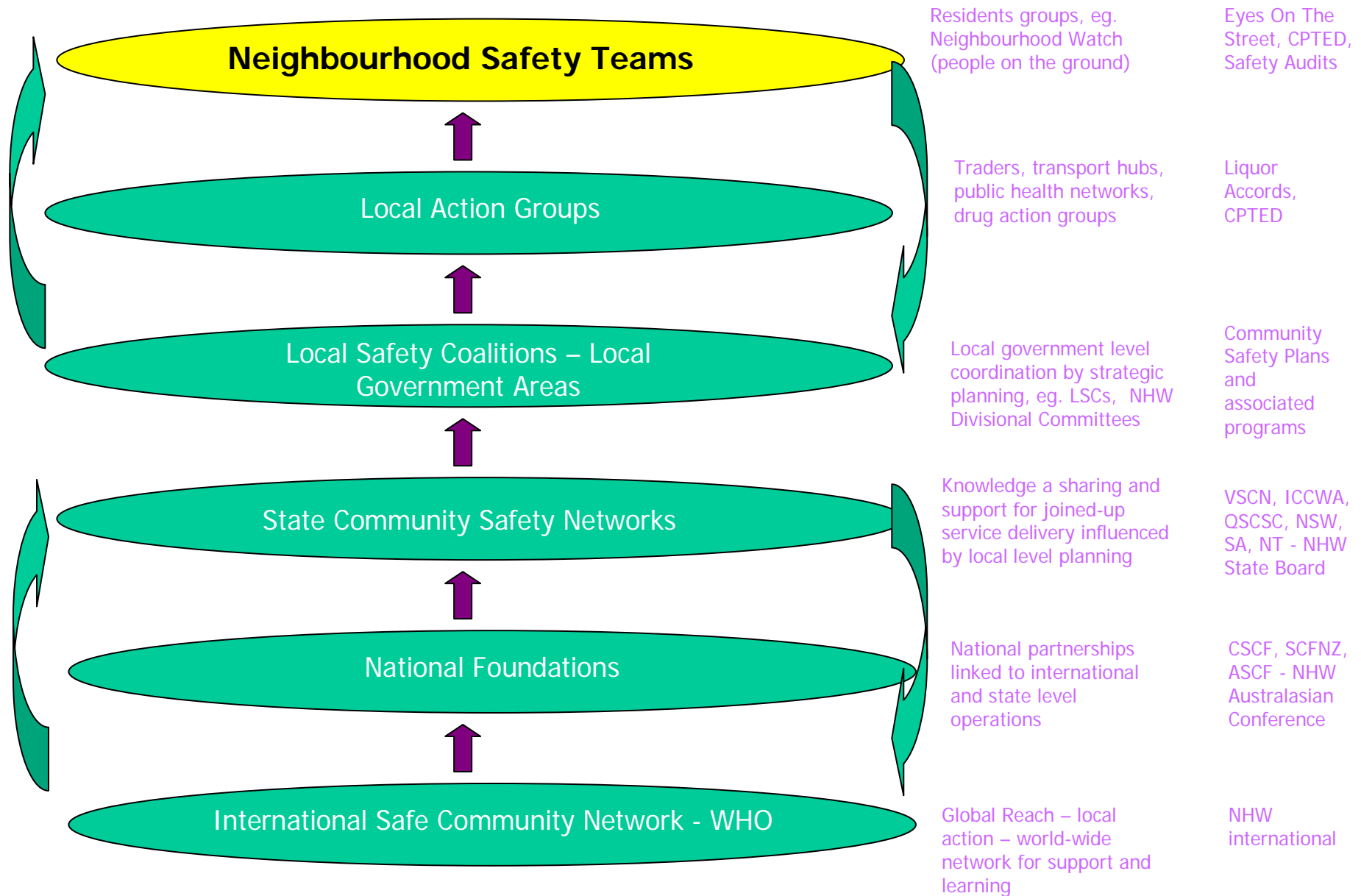
# Community Safety Infrastructure

## GROUPS

## Program Examples



# Community Safety Infrastructure



# Neighbourhood Safety Teams



- NHW groups are ideally placed to become the 'neighbourhood safety teams'
- promoting community safety – injury prevention, road safety, home safety, as well as crime prevention
- at the sharp end - 'in the streets and neighbourhoods near where we live'
- linking individuals with community safety promotion programs
- supported by the strongly networked and fully integrated local, state, national and international SC movement

# Summary



1. WHO Safe Communities Network – global in reach, local in action
2. The CSCF, SCFNZ, ASCF and VSCN have grown out of, and support, the WHO community based safety promotion and injury prevention model
3. NHW is a part of the community safety family at each of the international, national, state and local levels
4. NHW groups can become ‘neighbourhood safety teams’ promoting community safety at the neighbourhood level







Australasian NHW Conference, Melbourne, 6 October, 2005











# The Prevention Cycle



**What is happening**

**Identify and analyse  
the problems – data,  
surveys, reports**

# The Prevention Cycle



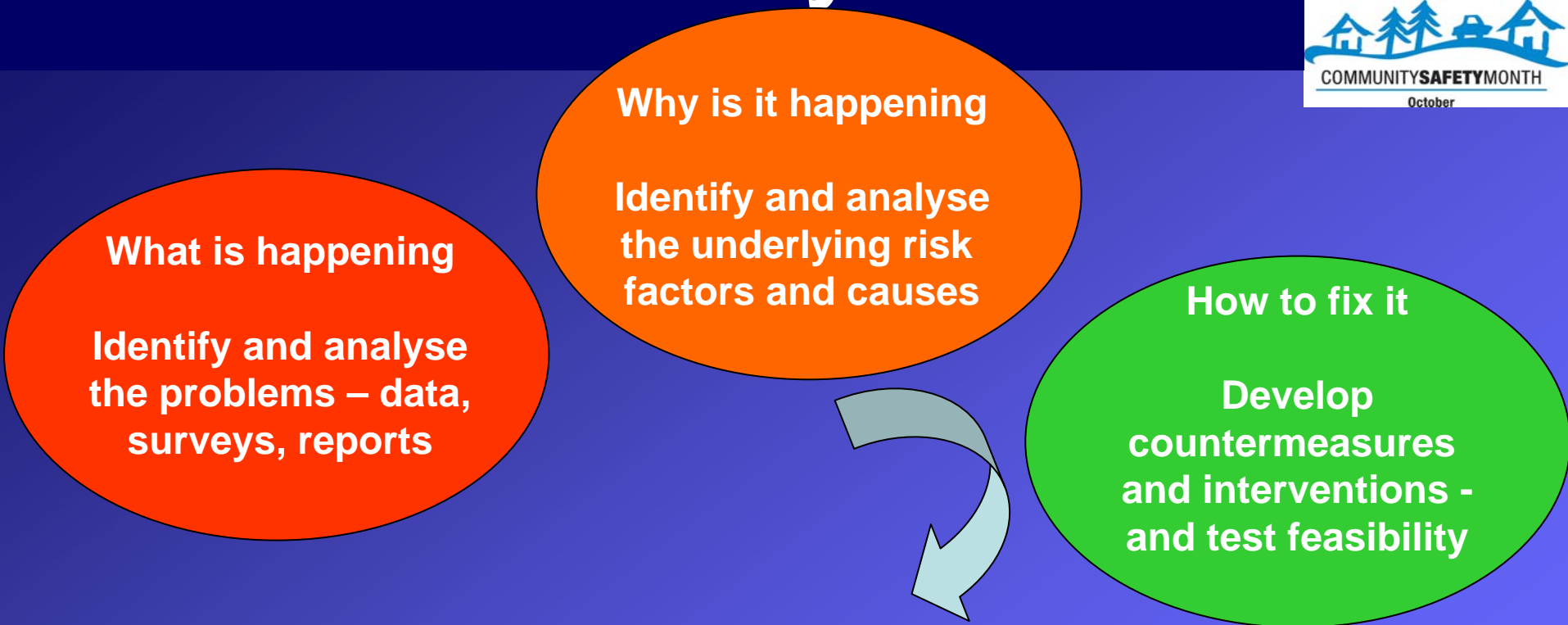
**What is happening**

**Identify and analyse  
the problems – data,  
surveys, reports**

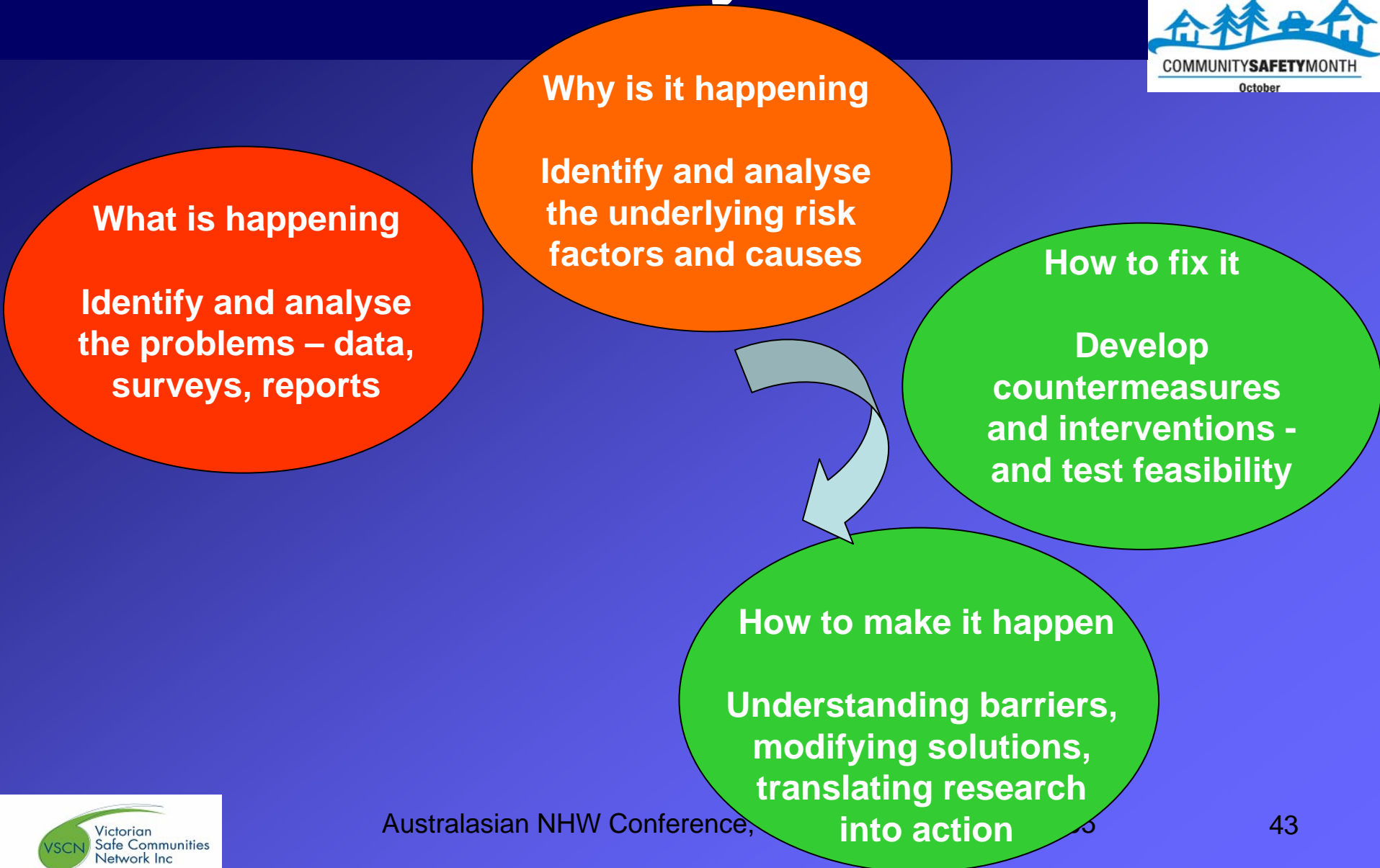
**Why is it happening**

**Identify and analyse  
the underlying risk  
factors and causes**

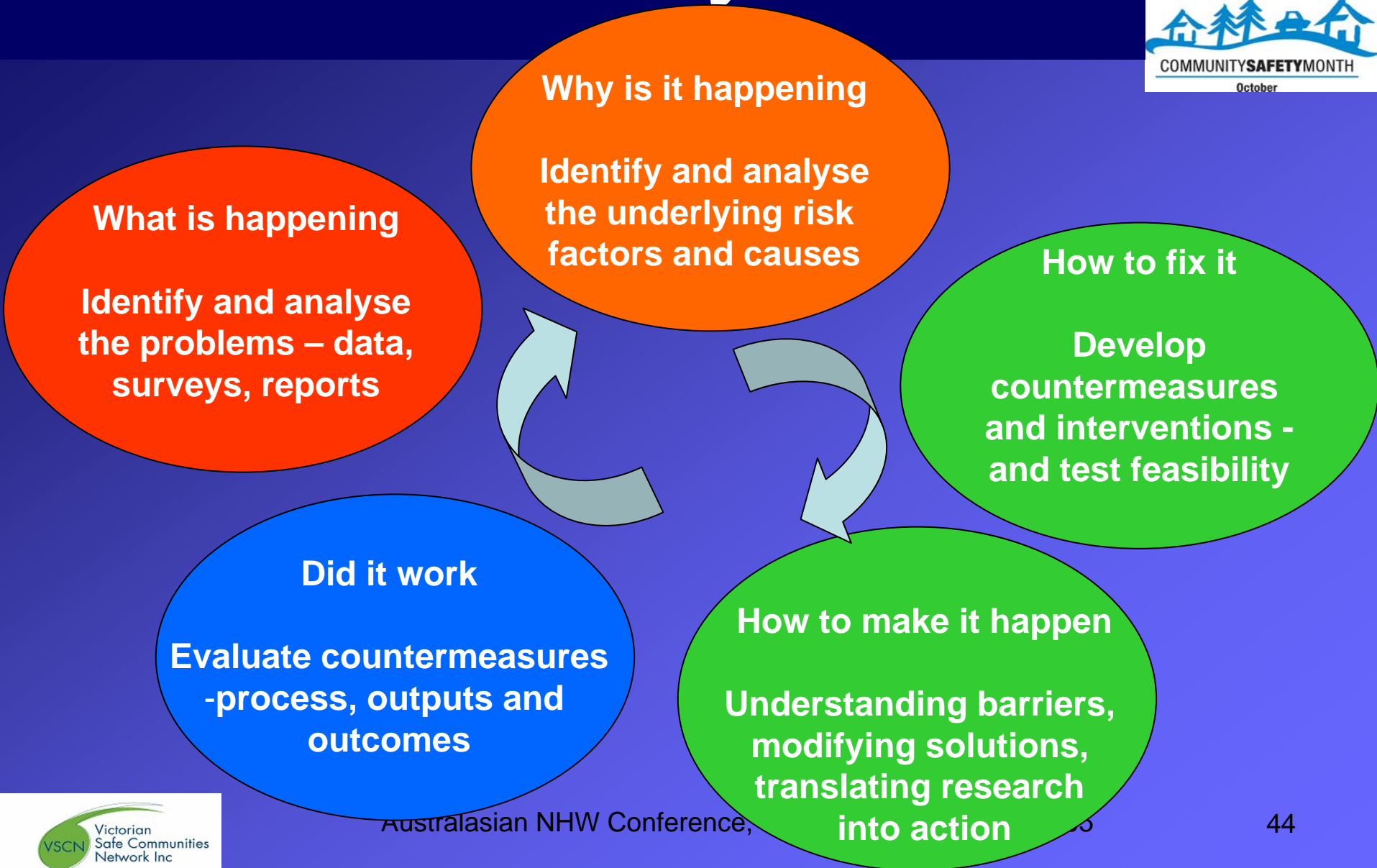
# The Prevention Cycle



# The Prevention Cycle



# The Prevention Cycle





# The Prevention Cycle

