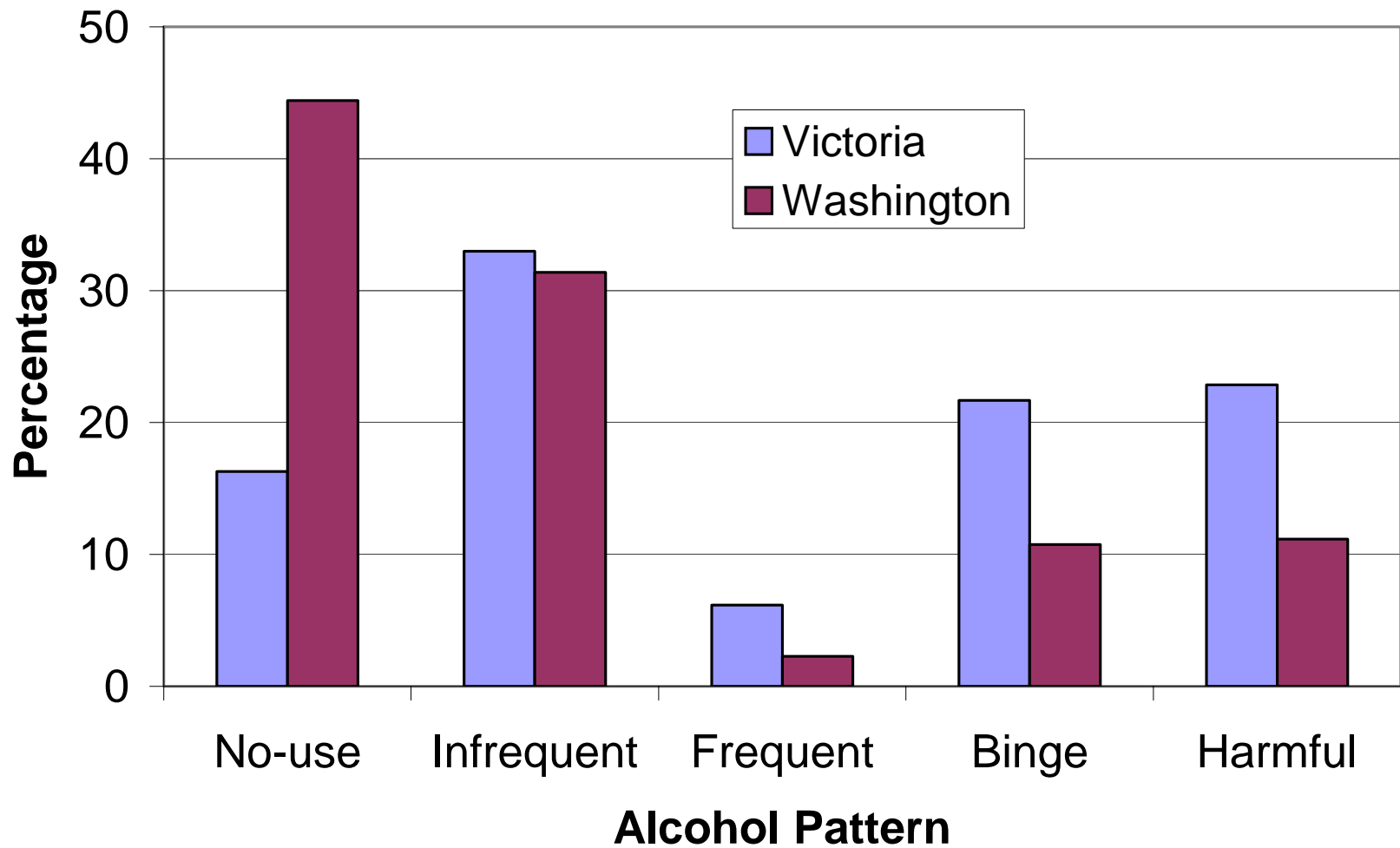


# Acceptance of an alcohol culture: Looking for effective responses

Professor John W. Toumbourou, PhD  
*Chair in Health Psychology,  
Deakin University*

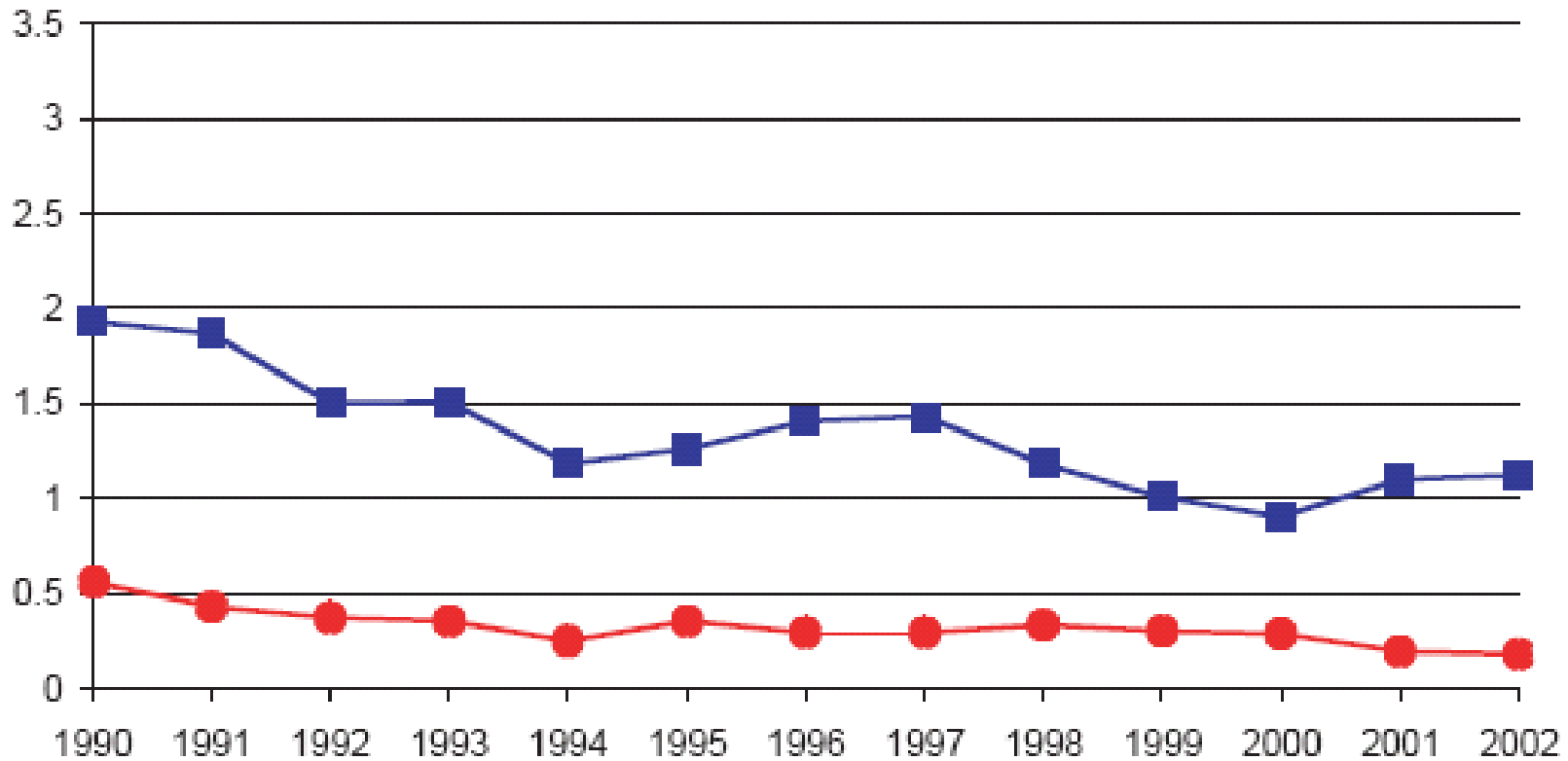
*VicHealth Senior Research Fellow,  
Centre for Adolescent Health,  
Murdoch Childrens Research Institute*

# Year 10 - Females



Australian harm  
minimisation policies  
have reduced youth  
deaths related to alcohol

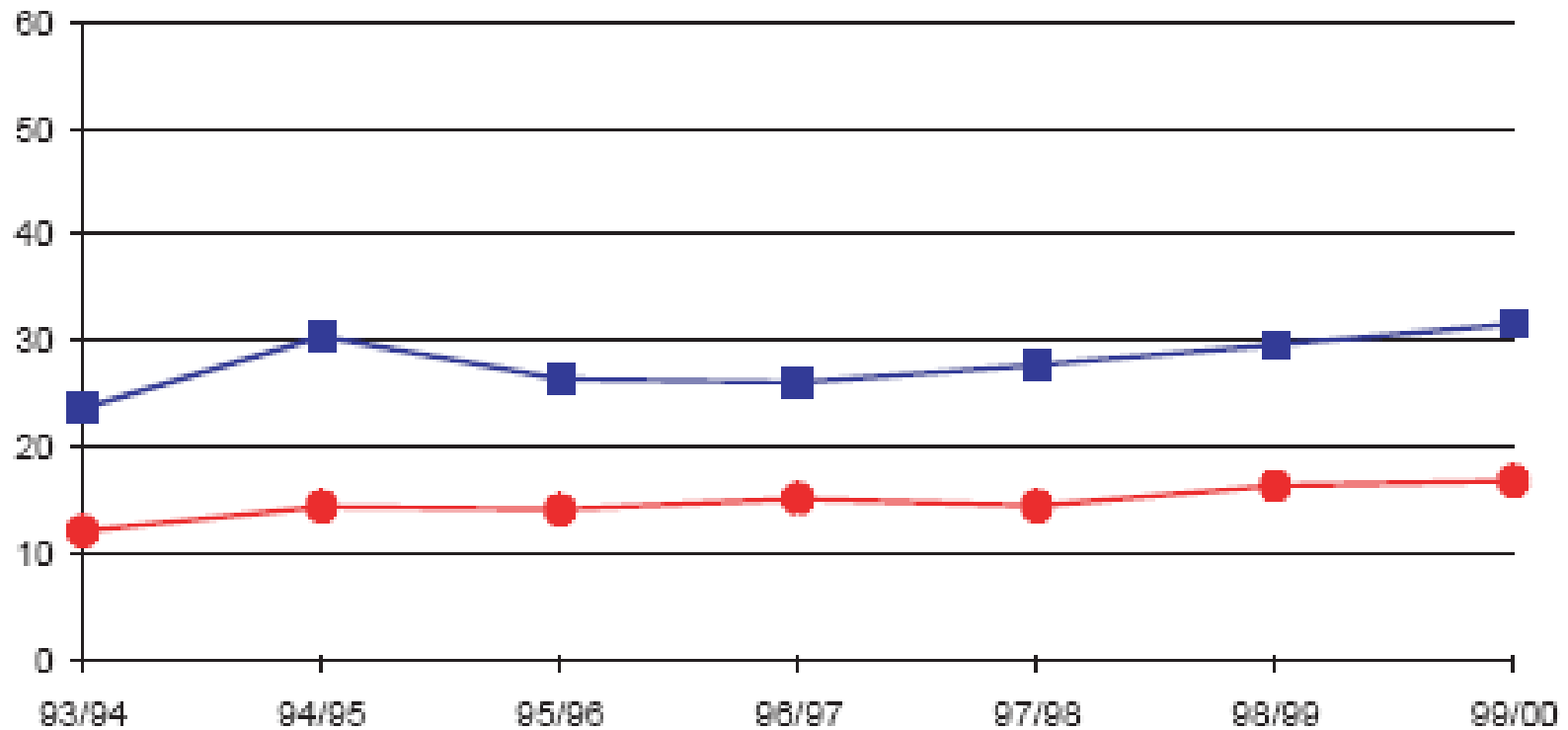
## Victoria



**Figure 1:** Alcohol-attributable deaths for 15–24 year olds, males and females, 1990–2002  
Legend: ■ males; ● females. Y Axis: Alcohol-attributable death rate per 10,000 15–24 yr olds.

the trends are not so  
positive for other  
harms

## Victoria



**Figure 5:** Alcohol-attributable hospitalisations for 14–17 year olds, males and females, 1993/94–1999/00

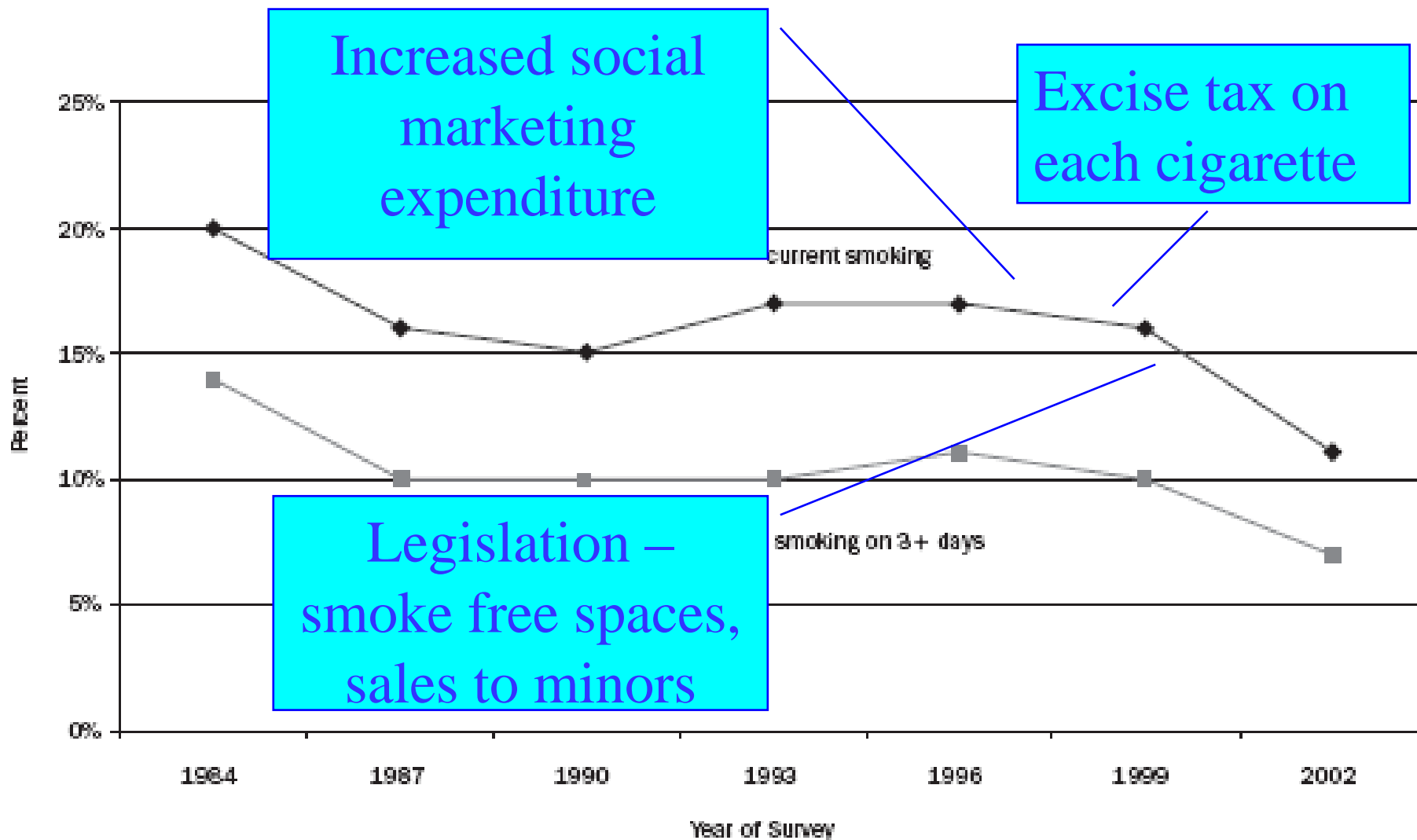
Legend: ■ males; ● females. Y Axis: Alcohol-attributable hospitalisation rate per 10,000 14–17 yr olds.

# We are not monitoring developmental harm

- ? Female heavy alcohol use contributing to problems with infants & children
- ? Early use increasing levels of dependence
- ? Mental health impacts (eg., self-harm)
- ? Brain impacts

*Australian public health  
approaches are effective*

Figure 2: Trends in proportion of current smoking (smoked in past week) and committed smoking (smoked on 3 or more days of past week) among 12–15-year-old students



Evidence-based  
approaches for reducing  
underage alcohol  
problems

## NEW INVESTMENTS

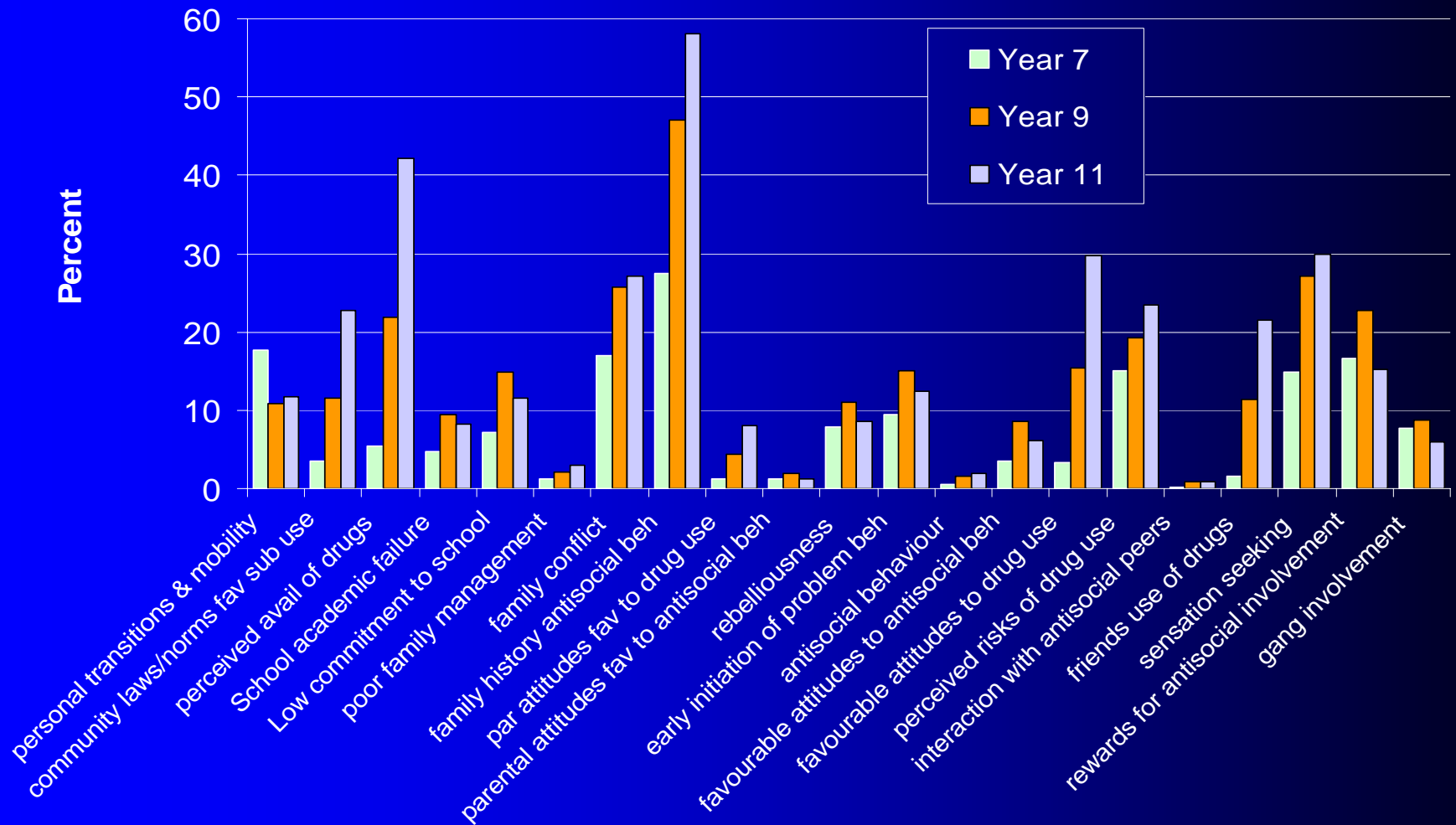
## WHO?

- Tax on alcohol \*\*\*
  - Liquor Licensing \*\*\*
    - Age 21
    - Industry regulation
  - Community Change \*\*
  - Enforcing local laws
  - Community mobilisation
- Federal  
State  
Local

How do we encourage  
community change?

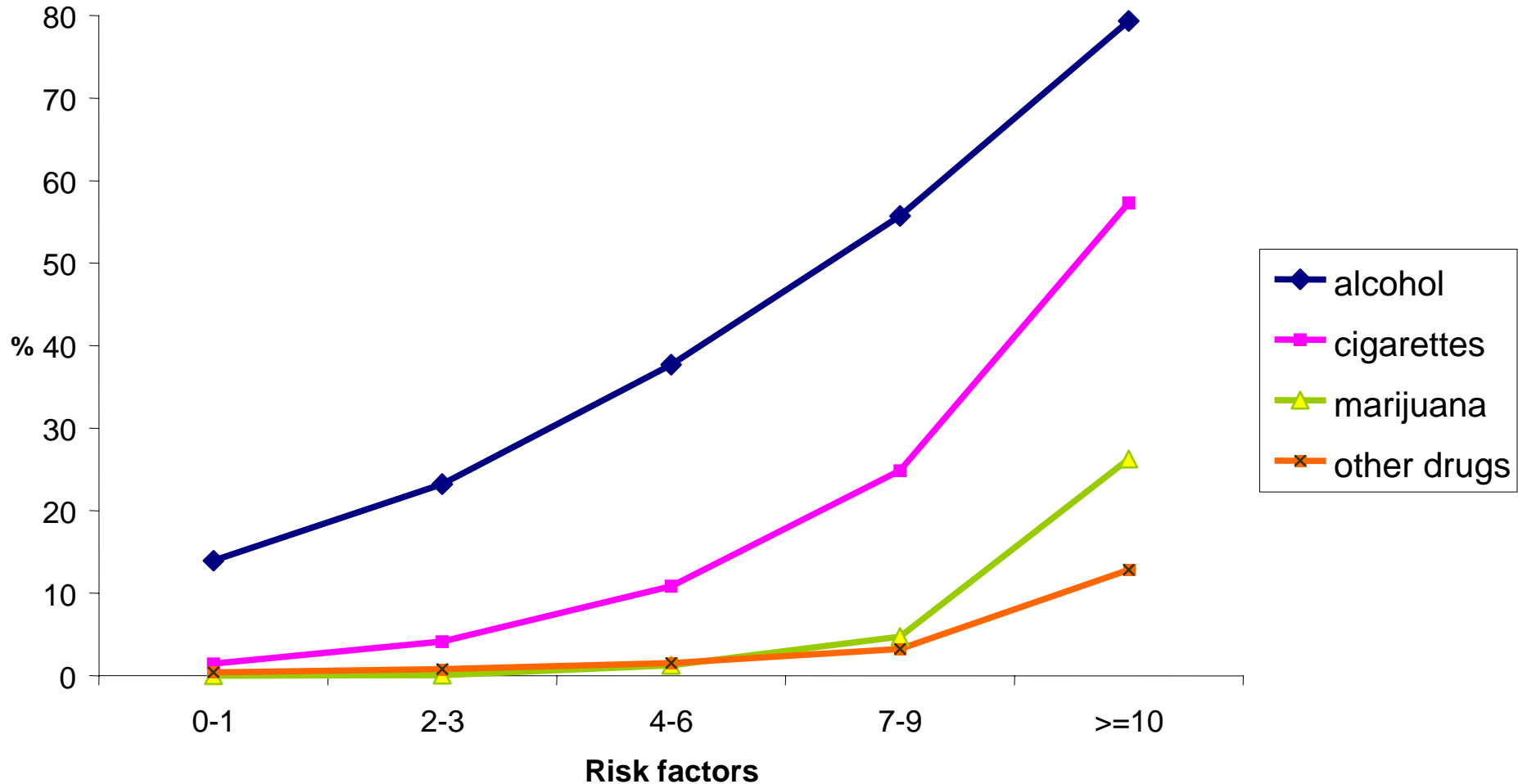
Australian adaptation of  
the Communities That  
Care Youth Survey

# Prevalence of Risk Factors by Year Level



# Victorian Department of Human Services, 1999

## Elevated risk factors for recent substance use



# Different Pathways

early life

childhood

adolescence

adulthood

developmental  
deficits



school & peer  
adjustment



illicit drug &  
mental health  
problems

community &  
family factors



early drug use  
frequent use



harmful  
drug use

THE VICTORIAN ALCOHOL STATISTICS HANDBOOK

08



Turning Point  
Alcohol & Drug Centre

**ALCOHOL USE AND RELATED  
HARM AMONG YOUNG PEOPLE  
ACROSS VICTORIAN LOCAL  
GOVERNMENT AREAS 2006**

Laslett, A-M., Matthews, S.M. & Dietze, P. (2006).

**Table 12 Summary table of SEIFA score, drinking pattern, rate of licensed premises and alcohol-related problems among young people, Victorian regions, 2000–2004**

Region	SEIFA score (2001)	VYADS % risky & high risk drinking 16-24 yrs (2004)	Licensed premises per 10,000 15-24 yrs (2006)	Assaults 18-24 yrs (2001/04)	Family incidents 18-24 yrs (2001/04)	Serious road injuries 18-24 yrs (2001/04)	Hospital admissions 15-19 yrs (2001/04)	Hospital admissions 20-24 yrs (2001/04)	Deaths 15-24yrs (2001/04)
Benwon-South Western	970.52	82.3 +	315.88 +	38.60 +	21.80 +	8.65	45.98 +	58.41 +	0.91
Grampians	959.88	78.5	380.81 +	41.05 +	29.80 +	12.38	34.64	40.72	0.98
Loddon Mallee	954.38	68.9	395.48 +	38.70 +	35.95 +	11.18	35.42	48.75	1.06
Hume	959.34	85.0 +	508.12 +	42.48 +	38.85 +	11.53	44.81 +	53.37	1.05
Gippsland	947.65	81.3	379.68 +	53.99 +	37.16 +	11.81	43.15	53.73	0.99
North & West Metropolitan	1,008.24	73.5	218.76 -	23.73 -	13.31 -	8.55 -	40.54	40.83 -	0.60
Eastern Metropolitan	1,074.80	73.5	185.18 -	22.63 -	10.74 -	9.82	34.23 -	42.58 -	0.50
Southern Metropolitan	1,030.98	77.3	234.93 -	29.64	18.20	10.74	41.47	52.43 +	0.78
Victoria	1,012.03	76.4	254.48	28.59	18.40	9.88	38.69	48.27	0.72

Sources are the same as identified previously.

Laslett, A-M., Matthews, S.M. & Dietze, P. (2006).

**CTC risk factors  
1999**



**hospital admissions  
2001/04**

# Alcohol-related hospital admissions 2001/04

Mixed-effects REML regression

Number of obs = 8247

Wald chi2(4) = 1811.87

Prob > chi2 = 0.0000

Log restricted-likelihood = -26474.967

hospad	Coef.	Std. Err.	z	P> z	[95% Conf. Interval]
seifa2001	-.0322589	.0009524	-33.87	0.000	-.0341257 - .0303921
licenp	.0117764	.000422	27.90	0.000	.0109492 .0126035
alcfreq	.0002868	.0150782	0.02	0.985	-.0292659 .0298394
1999 risk	1.165462	.2106922	5.53	0.000	.7525127 1.578411
_cons	68.24016	.9720611	70.20	0.000	66.33495 70.14536

How do we encourage  
political will?

# Tobacco control

- o public health approach
- o expert and independent centres
- o survey public opinion
- o target educational campaigns
- o bi-partisan political advocacy

